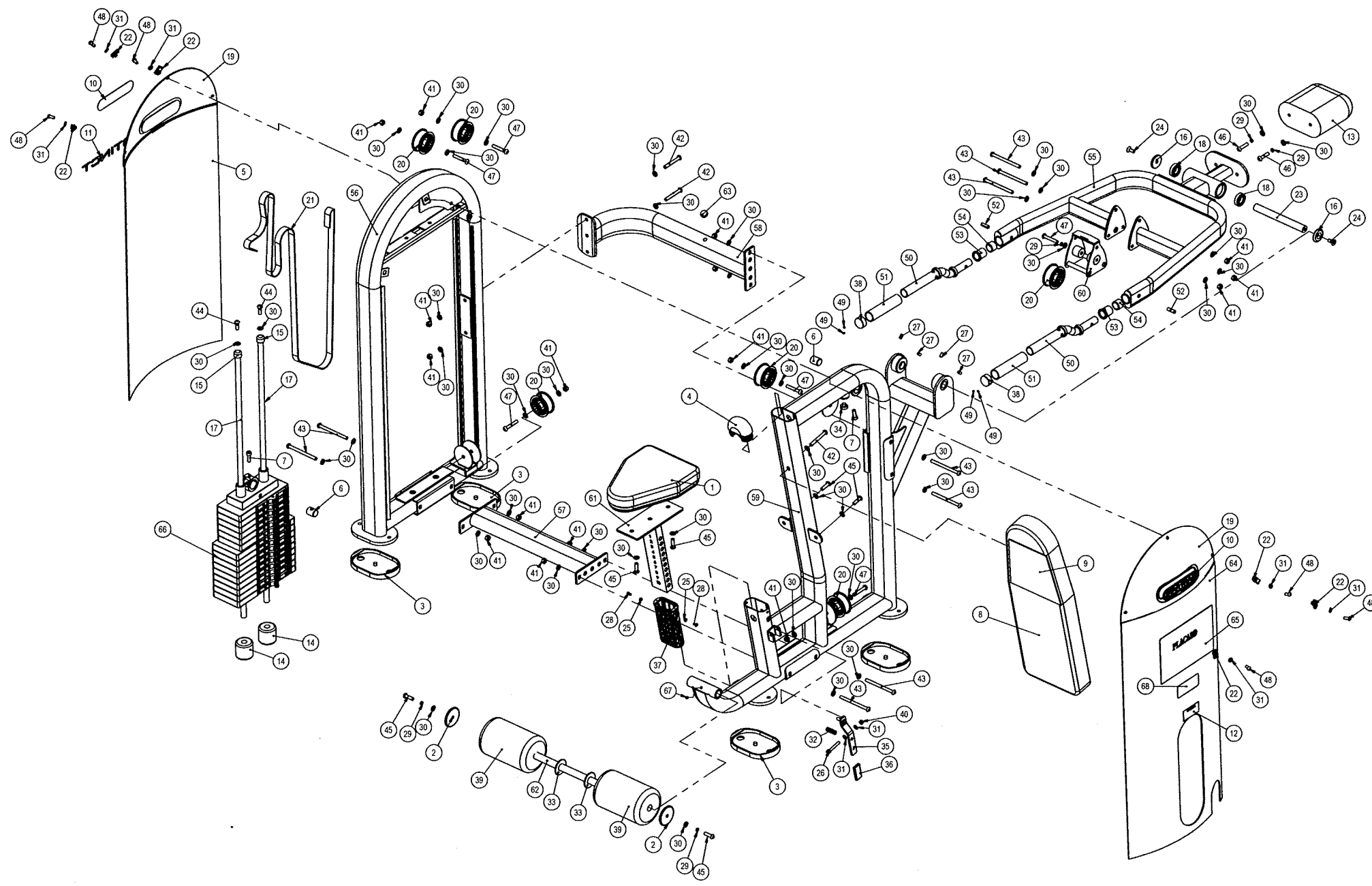


REVISIONS				
REV.	DATE	DESCRIPTION	ECO	BY
A	02/20/05	PRODUCTION RELEASE	11956	AK



ITEM NO.	STARTRAC P/N	INRAY P/N	DESCRIPTION	QTY.
1	730-0194	IN-B72012000	PAD, SEAT, IN-B7201	1
2	730-0200	IT80053800	PLUG, KNEE PAD, 75X10.5, S1012	2
3	730-0216	IN-B75030900	PAD, FOOT, FRAME, WELDED	4
4	730-0223	L1-5000	CAP, LARGE, FRAME	1
5	730-0233	IN-S10121500	SHROUD, REAR, IN-S5100	1
6	730-0236	IN-S10121700	PIN, BELT ANCHOR	2
7	730-0237	GB70M10-30A2-70NL	SCREW, M10x30, SHS, SS	2
8	730-0246	IN-S21002200	PAD, BACK REST, IN-S2100	1
9	730-0321	IN-S21002205	HEAD STRAP, IN-S4100	1
10	730-0383	STARTRAC1	LOGO, STARTRAC	2
11	730-0384	Instinct	LOGO, INSTINCT	1
12	730-0385	CAUTION	LABEL, CAUTION, PINCH POINT	1
13	730-0551	IN-S33101400	COUNTERBALANCE, IN-S3310	1
14	730-0562	IN-D10132900	BUMPER, STACK, 60MM	2
15	730-0565	IT80129500	CAP, END, HANDLE	2
16	730-0656	IN-S51102100	CAP, 50MM OD	2
17	730-0662	IN-S21001300	WEIGHT STACK, GUIDE RAIL	2
18	730-0673	GB2766005-2Z	ISO 15 RBB - 1025 - 14, SI, NC, 14, 68	2
19	730-0702	IN-D10132800	SHROUD, UPPER	2
20	730-0721	IN-S51101000	PULLEY, 75MM	6
21	730-0778	IN-S10112000	BELT	1
22	730-0845	IN-S21004800	SHROUD, MOUNTING, U-STYLE, CLIP	6
23	730-0846	IN-S33200800	SHAFT, 25MM X 234	1
24	730-0870	CNLM10-25A2-70	SCREW, M10x25, FHM, HK, SS	2
25	730-0885	GB41M6A2-70	NUT, M6, JAM, HEX, SS	2
26	730-0892	GB70M8-55A2-70	SCREW, M8x55, SHS, SS	1
27	730-0896	GB77M8-16A2-70	SCREW, M8x16, SET, SS	4
28	730-0899	GB81M6-12A2-70	SCREW, M6x12, BHC, SS	2
29	730-0905	GB93D0G12	WASHER, M8, SPLIT, LOCK, SS	5
30	730-0908	GB9510A2-70	WASHER, M10, FLAT, SS	44
31	730-0910	GB958A2-70	WASHER, M8, BELLEVILLE, SS	8
32	730-0911	HF1642303	ADJUSTMENT, HANDLE, COMPRESSION SPING	1
33	730-0912	HF1652100	SPACER, 26MM ID, 60MM OD	2
34	730-0913	HF3574000	BUMPER	1
35	730-0930	IN-B72010600	ASSY EXTENSION, ADJUSTMENT, HANDLE	1
36	730-0935	IN-B72011400	ASSY ADJUSTMENT, HANDLE, END, SLEEVE	1
37	730-0936	IN-B72011700	ASSY TUBE, INSERT, SLEEVE	2
38	730-0960	IN-B75021300	CAP, HANDLE, GRIP, 33MM	2
39	730-1068	IN-S33101100	ROLLER, LEG, PAD, M140X215	2
40	730-1103	NM8A2-70	NUT, M8, NYLON PATCH, SS	1
41	730-1104	NM10A2-70	NUT, M10, NYLON PATCH, SS	16
42	730-1109	PNLM10-80A2-70	SCREW, M10x80, BH, SS	3
43	730-1112	PNLM10-130A2-70	SCREW, M10x130, BH, SS	9
44	730-1118	PNLM10-30A2-70	SCREW, M10, BHC, HK, SS	2
45	730-1119	PNLM10-35A2-70	SCREW, M10x35, BH, SS	6
46	730-1121	PNLM10-45A2	SCREW, M10x45, BHC, SS	2
47	730-1122	PNLM10-63A2-70	SCREW, M10x63, BHC, SS	6
48	730-1138	PNLM8-20A2-70	SCREW, M8x20, BHC, SS	6
49	730-1155	YZGB7710-32x3 2DS2	SCREW, 10-32X3 2, SET	4
50	730-1258	IN-S51300900	HANDLE, IN-S5130	2
51	730-1259	IN-S51303500	HANDLE, RUBBER, GRIP	2
52	730-1260	GB87910-30DS12	SLOTTED SPRING PIN, M5X32	2
53	730-1261	IN-S51304500	FLANGED SLEEVE BEARING, M5X32	2
54	730-1262	IN-S51307500	SLEEVE BEARING, M25X25	2
55	730-1263	IN-S51300500	U-SHAPE HANDLE, IN-S5130	1
56	730-1264	IN-S51300100	WEIGHT STACK FRAME	1
57	730-1265	IN-S51300400	CROSSBEAM, LOWER FRAME	1
58	730-1266	IN-S51300300	CROSSBEAM, UPPER FRAME	1
59	730-1267	IN-S51300200	ASSY MAIN FRAME	1
60	730-1268	IN-S51300600	ASSY PULLEY HANDLE	1
61	730-1269	IN-S51300700	ADJUSTMENT, SEAT, POST, IN-S5130	1
62	730-1270	IN-S51300800	PIVOT, SHAFT, M25X570	1
63	730-1271	TAB-3353600	BUMPED, PAD	1
64	730-1336	730-1336	SHROUD, LNL, S5130	1
65	730-1365	TZZS5130	PLACARD, INSTRUCTION, IN-S5130	1
66	730-1399	730-1399	WSA-LNL, 180LB, 15H	1
67	730-1405	YZGB77M8x6 2DS2	GB_SOCKET_SET_TYPE4 M8X6-N	1
68	730-1491	730-1491	LABEL, INSTRUCTIONS, LOCK N LOAD	1

replacements part list

ITEM NO.	STARTRAC P/N	DESCRIPTION	QTY.
19	730-0228	KIT, UPPER SHROUD	1
20	730-0229	KIT, PULLEY, 76MM	1
5	730-0233	SHROUD, REAR, IN-S5100	1
66	730-1336	SHROUD, LNL, S5130	1
37	730-0213	KIT, SLEEVE, SEAT	1
50	730-0156	KIT, GRIP, 32MM	1
13	730-0551	KIT, COUNTERBALANCE	1
8	730-0246	KIT, SEAT, BACK	1
3	730-0216	PAD, FOOT, FRAME, WELDED	1
14	730-0562	BUMPERS, STACK, 60MM	1
1	730-0194	KIT, SEAT	1
21	730-0215	KIT, BELT REPLACEMENT	15.5 FT

PRODUCTION DOCUMENT RELEASE

NOTICE OF PROPRIETARY INFORMATION
THIS DOCUMENT SHALL NOT BE REPRODUCED NOR SHALL THE INFORMATION CONTAINED HEREIN BE USED BY OR DISCLOSED TO OTHER EXCEPT AS EXPRESSLY AUTHORIZED BY UNISEN

MATERIAL SEE BOM	TOLERANCES UNLESS OTHERWISE SPECIFIED X.XX ± .01 (3 DIM) X.X ± .005 (2 DIM) X ± .002 (1 DIM) X ± .001 (1 DIM)	UNISEN, INC. DBA STARTRAC 14410 Myford Road Irvine CA 92606
FINISH FRAME COLOR: STAR TRAC SILVER (HP FULLER) UPHOLTERY COLOR STAR TRAC GREY (SLATE)	DRAWN BY: AK CHECKED BY: [Signature] APPROVED BY: [Signature]	REV: A DATE: 07/26/07 PART NO: 91L-S5130-13BSS REV: A TITLE: IN, SSS, DIP PRESS, LNL SCALE: 1:25 SHEET 1 OF 1 SHEET SIZE: B
VENDOR: N/A	P/N: N/A	